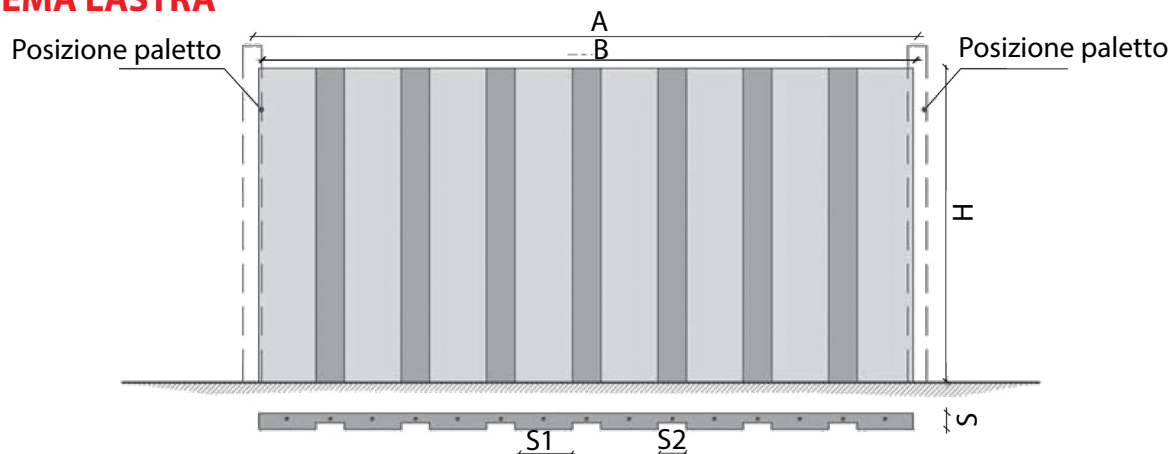


RECINZIONE INDUSTRIALE

PANNELLO CIECO
PER RECINZIONE INDUSTRIALE 300x200

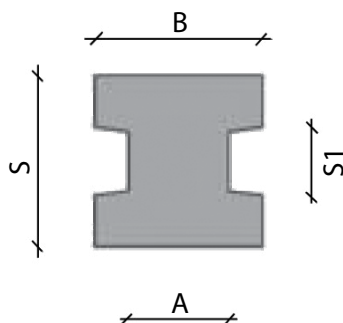
SCHEMA LASTRA



A	B	H	S1	S2	CODICE
(cm)	(cm)	(cm)			
300	287	200	10	5	RZ 300

armatura lastra: n°2 reti elettrosaldate $\Phi 6/\Phi 6$ maglia 200x200 mm

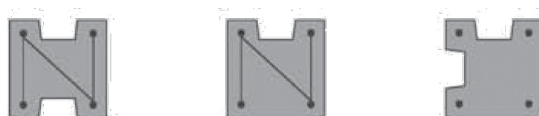
PIANTA PALO



A	B	H	S	S1	CODICE
(cm)	(cm)	(cm)			
12	20	250	20	8	RZ 300/1

interasse pali: 300 cm

SCHEMA D'ARMATURA



armatura pali: n°4 $\Phi 8$ - staffe $\Phi 6$ mm